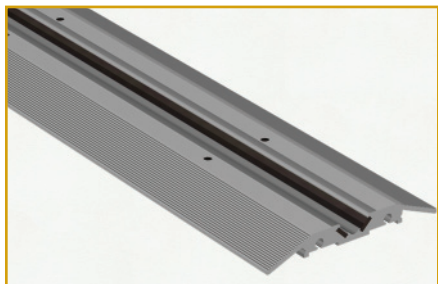




A DIVISION OF PIPP MOBILE STORAGE SYSTEMS, INC.

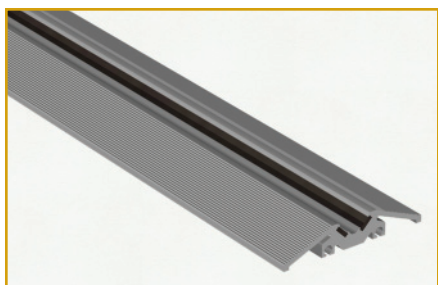
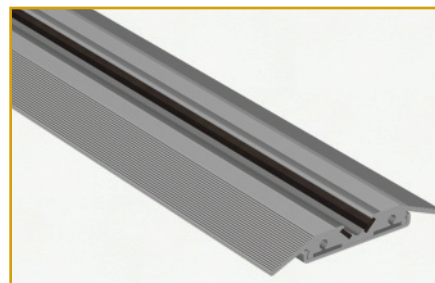
2966 Wilson Drive NW
Walker, MI 49534
P 800-521-9334
F 616-791-9916
www.denstor.com

"V" Groove Track System



Adjustable Standard Manual Track is 3-1/4" wide, less than 7/16" at its highest point and is made from heat treated aluminum. The adjustable track has set screws which allow for a 1/4" of leveling if needed. This track can be used with the standard manual carriage.

Standard Manual Track is 3-1/4" wide, less than 7/16" at its highest point and is made from heat treated aluminum. There is no adjustability within this style track but this track can be leveled through shimming. This track can be used with the standard manual carriage.



PTN-HD Manual Track is 2.7" wide, less than 1/2" at its highest point and is made from heat treated aluminum. There is no adjustability within the track for this style but this track can be leveled through shimming. This track can be used with the standard manual carriage, provides a price competitive heavy duty track option. The PTN-HD Manual Track is compatible with all In-Track Anti-Tip Tracks.

NOTE: Depending on the application there are other variations available. They include a solid aluminum track or flat edged track for decking.

Standard Manual Carriage is used primarily in retail applications, such as shoes, apparel, and handbags and in lighter applications of open filing systems in office environments.

- |||| Overall construction is an assembly of 2" angles (for length) and channels (for depth).
- |||| Height of the system is 2 3/4" from floor to top of angle (shelving mounting surface).
- |||| Maximum length of the carriage is 12'.
- |||| Overall weight capacity is 3000 lbs./carriage. This restriction is not the capacity of the carriage, but the maximum load a person can move.
- |||| Wheels are 1.58" diameter ball bearing, permanently lubricated and sealed.
- |||| Material is heat-treated aluminum.

Shelving Options: Rivet Style, Tab Style or 4 Post L&T Style

Applicable Track: Floor Mounted "V" Groove

Anti tip Options: In-Track, Overhead or "Z" Rail



All track is cut to specific lengths based on the project. Denstor carriages require a track under each shelving upright.